

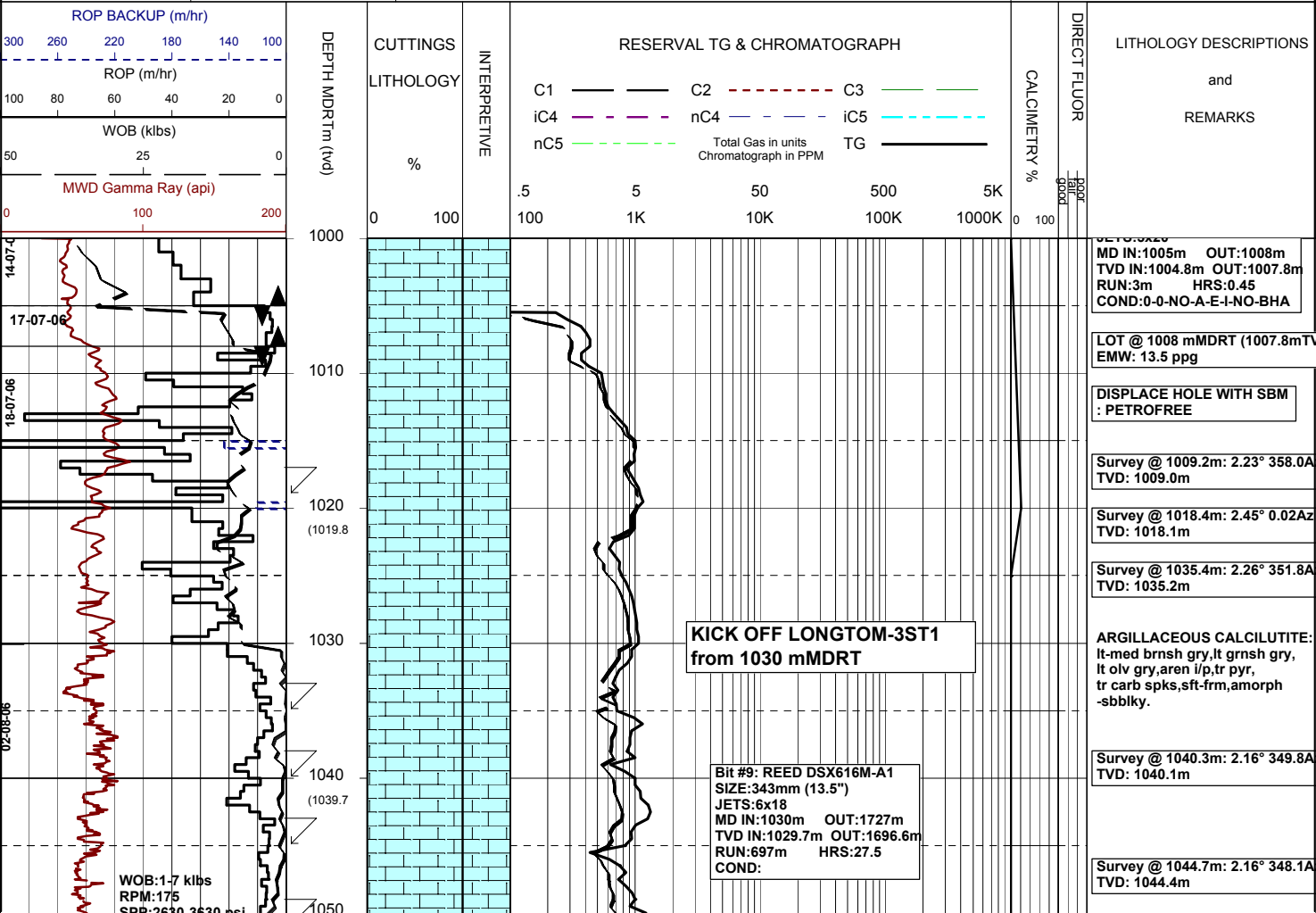


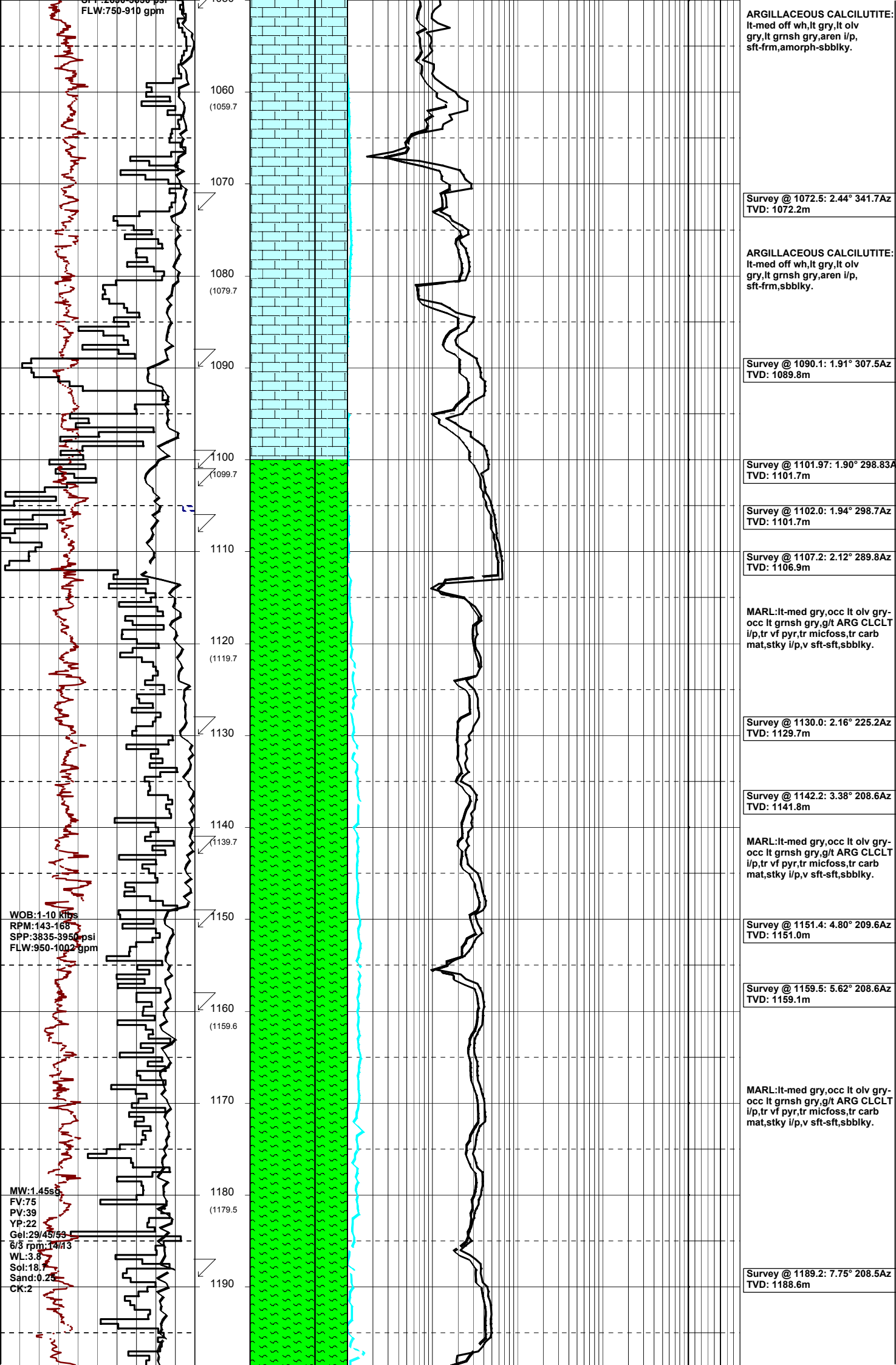
MASTERLOG LONGTOM-3ST1



GENERAL	POSITION	HOLE / CASING INFO	DATE / DEPTH	ENGINEERS
Country : AUSTRALIA	Latitude : 38°05'34.63"S	914mm(36") hole to: 111.8m	Spud Date : 02-08-2006	T. N. KYAW
Permit : VIC/P54	Longitude : 148°18'41.52"E	559mm(22") hole to: 1005m	Total Depth Date : XX-XX-2006	A. DUNN
Field : LONGTOM	UTM Co-ord X (m E): 615006	241mm(9 1/2") hole to: m	Total Depth (mMDRT): m	D. ADDERLEY
Basin : GIPPSLAND	UTM Co-ord Y (m N): 5783059.3	762mm(30") Cond. to: 110.8m	True Vertical Depth (mTVDSS): m	
Well Type : APPRAISAL	RT to LAT (m): 21.5	406mm(16") Csg. to: 995.32m	Log Scale : 1/ 500	
Rig: OCEAN PATRIOT	RT to Sea Bed (m): 78.2		Final Status : ??	

ABBREVIATIONS	LITHOLOGY LEGEND	ENGINEERING LEGEND
MW Mud Weight FV Funnel Viscosity PV Plastic Viscosity YP Yield Point Gel Gel Strength WL Water Loss KCl Potassium Chloride Cl Chlorides Incl Inclination Az Azimuth WOB Weight on Bit (klbs) RPM Rotations Per Min FLW Flow Rate (gpm) SPP Pump Pressure (psi) RR Re-Run Bit TG Trip Gas CG Connection Gas BG Background Gas DGP Drilled Gas Peak MM Mud Motor	Claystone Siltstone Shale Fine SST Medium SST Coarse SST Marl Clay, Limestone Limestone Dolomite Coal Volcanic Lithic Fragment Foraminifera Fossils Bryozoa Sponges Brachiopoda Cement Glauconite Pyrite Iron Minerals Mica Siderite	Shoe Deviation survey DST TEST Test Sidewall Core Core DOLOMITE RFT FIT Mud loss Mud gain





FLW:750-910 gpm

1060
(1059.7)

1070

1080
(1079.7)

1090

1100
(1099.7)

1110

1120
(1119.7)

1130

1140
(1139.7)

1150

1160
(1159.6)

1170

1180
(1179.5)

1190

ARGILLACEOUS CALCILUTITE:
lt-med off wh,lt gry,lt olv
gry,lt grnsh gry,aren i/p,
sft frm,amorph-sbbkly.

Survey @ 1072.5: 2.44° 341.7Az
TVD: 1072.2m

ARGILLACEOUS CALCILUTITE:
lt-med off wh,lt gry,lt olv
gry,lt grnsh gry,aren i/p,
sft frm,sbbkly.

Survey @ 1090.1: 1.91° 307.5Az
TVD: 1089.8m

Survey @ 1101.97: 1.90° 298.83Az
TVD: 1101.7m

Survey @ 1102.0: 1.94° 298.7Az
TVD: 1101.7m

Survey @ 1107.2: 2.12° 289.8Az
TVD: 1106.9m

MARL:lt-med gry,occ lt olv gry-
occ lt grnsh gry,g/t ARG CLCLT
i/p,tr vf pyr,tr micfoss,tr carb
mat,stkly i/p,v sft-sft,sbbkly.

Survey @ 1130.0: 2.16° 225.2Az
TVD: 1129.7m

Survey @ 1142.2: 3.38° 208.6Az
TVD: 1141.8m

MARL:lt-med gry,occ lt olv gry-
occ lt grnsh gry,g/t ARG CLCLT
i/p,tr vf pyr,tr micfoss,tr carb
mat,stkly i/p,v sft-sft,sbbkly.

Survey @ 1151.4: 4.80° 209.6Az
TVD: 1151.0m

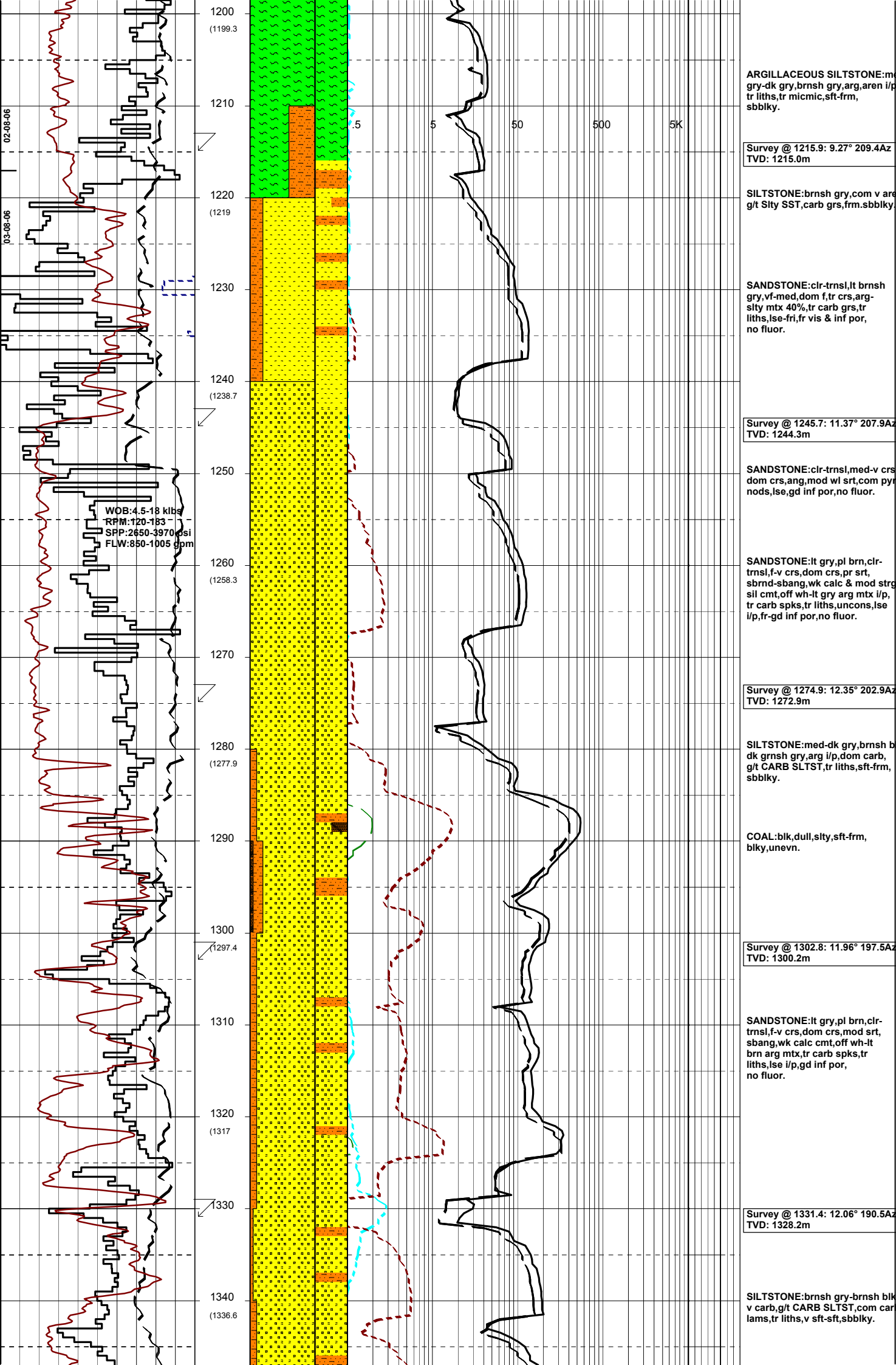
Survey @ 1159.5: 5.62° 208.6Az
TVD: 1159.1m

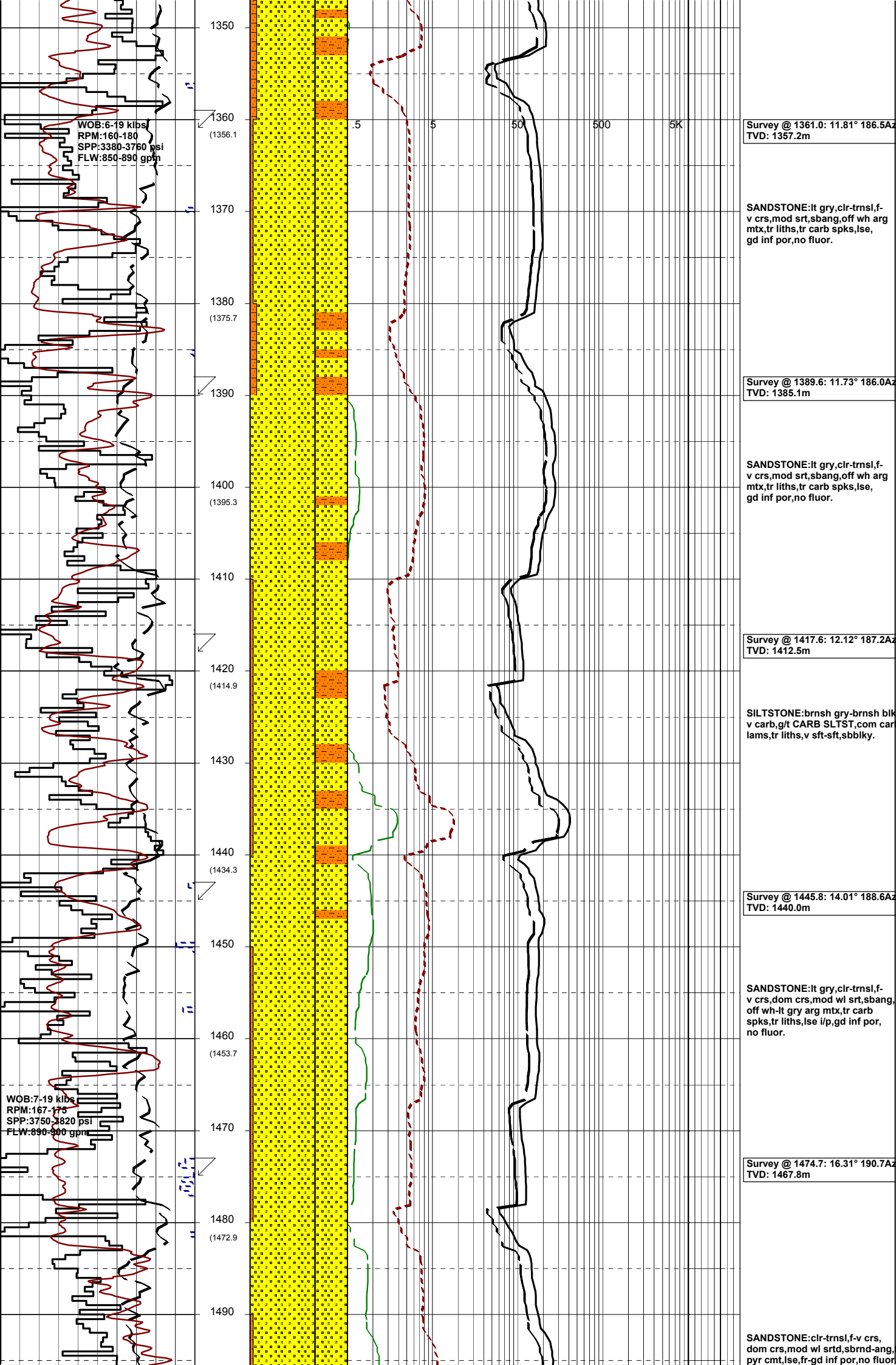
MARL:lt-med gry,occ lt olv gry-
occ lt grnsh gry,g/t ARG CLCLT
i/p,tr vf pyr,tr micfoss,sbbkly.

Survey @ 1189.2: 7.75° 208.5Az
TVD: 1188.6m

WOB:1-10 lbs
RPM:143-165
SPP:3835-3950 psi
FLW:950-1002 gpm

MW:1.45sc
FV:75
PV:39
YP:22
Gel:29/45/53
6/3 rpm:14/13
WL:3.8
Sol:18.7
Sand:0.22
CK:2





WOB: 6-19 klbs
 RPM: 160-180
 SPP: 3380-3760 psi
 FLW: 850-890 gpm

Survey @ 1361.0: 11.81° 186.5Az
 TVD: 1357.2m

SANDSTONE: lt gry, clr-trnsl, f-v crs, mod srt, sbang, off wh arg mtx, tr liths, tr carb spks, lse, gd inf por, no fluor.

Survey @ 1389.6: 11.73° 186.0Az
 TVD: 1385.1m

SANDSTONE: lt gry, clr-trnsl, f-v crs, mod srt, sbang, off wh arg mtx, tr liths, tr carb spks, lse, gd inf por, no fluor.

Survey @ 1417.6: 12.12° 187.2Az
 TVD: 1412.5m

SILTSTONE: brnsh gry-brnsh blk v carb, g/t CARB SLTST, com carb lams, tr liths, v sft-sft, sbblky.

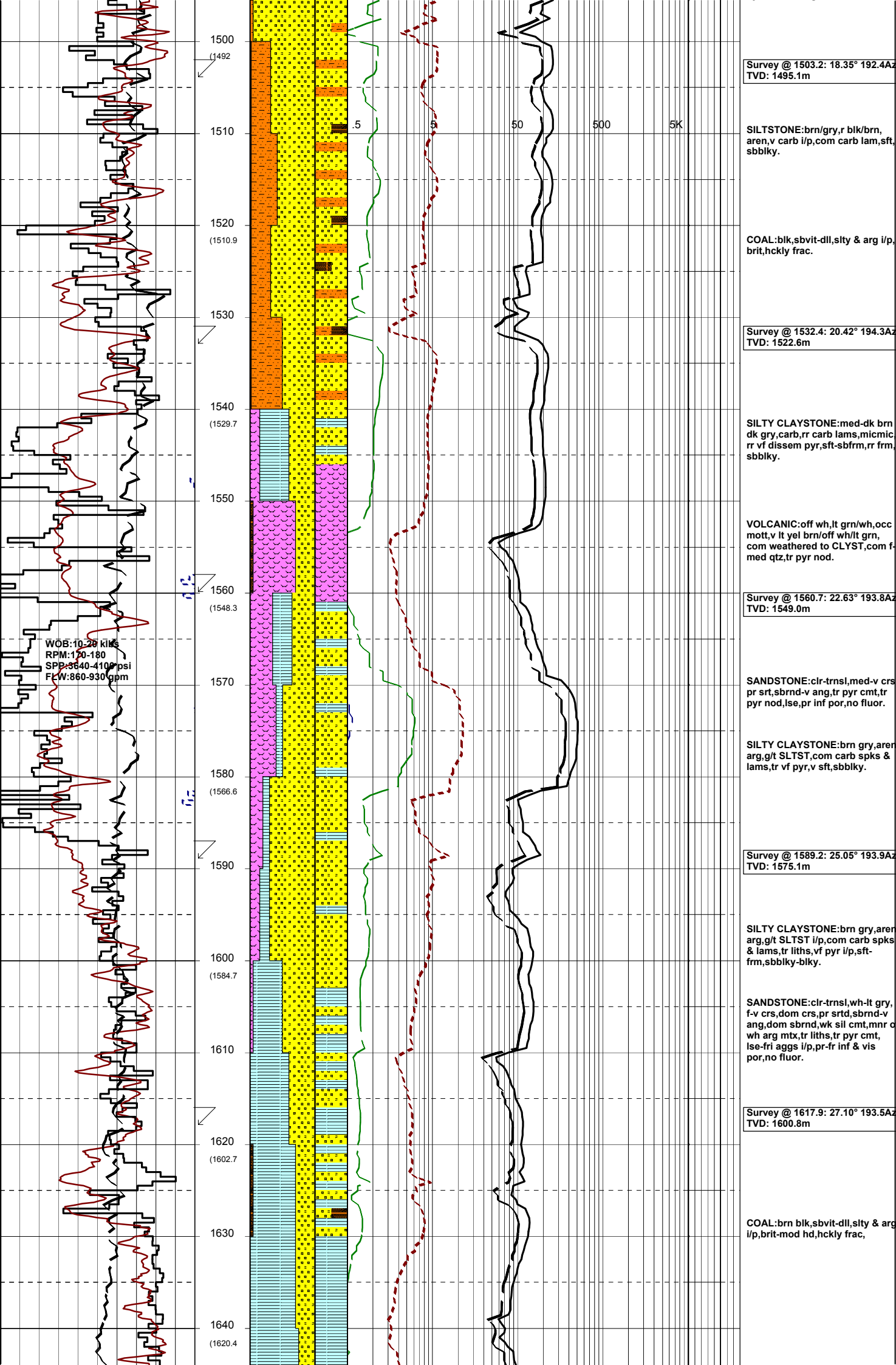
Survey @ 1445.8: 14.01° 188.6Az
 TVD: 1440.0m

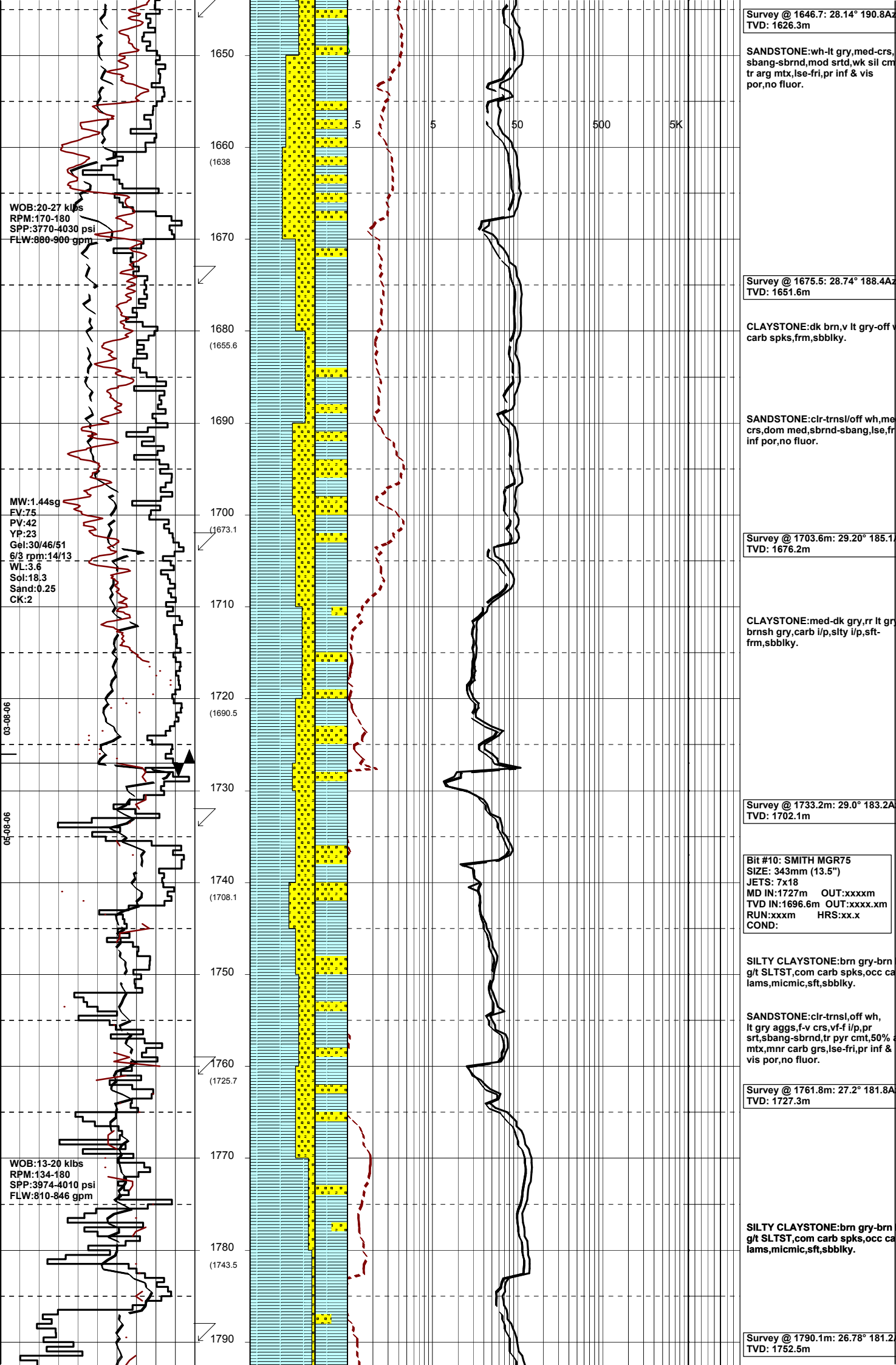
SANDSTONE: lt gry, clr-trnsl, f-v crs, dom crs, mod wl srt, sbang, off wh-lt gry arg mtx, tr carb spks, tr liths, lse i/p, gd inf por, no fluor.

Survey @ 1474.7: 16.31° 190.7Az
 TVD: 1467.8m

SANDSTONE: clr-trnsl, f-v crs, dom crs, mod wl srt, sbrnd-ang, pyr cmt, lse, fr-gd inf por, no fluor.

WOB: 7-19 klbs
 RPM: 167-178
 SPP: 3750-3820 psi
 FLW: 890-900 gpm





Survey @ 1646.7: 28.14° 190.8AZ
TVD: 1626.3m

SANDSTONE:wh-lt gry,med-crs, sbang-sbrnd,mod srtd,wk sil cmt, tr arg mtx,lse-fri,pr inf & vis por,no fluor.

Survey @ 1675.5: 28.74° 188.4AZ
TVD: 1651.6m

CLAYSTONE:dk brn,v lt gry-off v carb spks,frm,sbblky.

SANDSTONE:clr-trnsloff wh,me crs,dom med,sbrnd-sbang,lse,fr inf por,no fluor.

Survey @ 1703.6m: 29.20° 185.1
TVD: 1676.2m

CLAYSTONE:med-dk gry,rr lt gry brnsh gry,carb i/p,slty i/p,sft-frm,sbblky.

Survey @ 1733.2m: 29.0° 183.2AZ
TVD: 1702.1m

Bit #10: SMITH MGR75
SIZE: 343mm (13.5")
JETS: 7x18
MD IN:1727m OUT:xxxxm
TVD IN:1696.6m OUT:xxxx.xm
RUN:xxxm HRS:xx.x
COND:

SILTY CLAYSTONE:brn gry-brn g/t SLTST,com carb spks,occ ca lams,micmic,sft,sbblky.

SANDSTONE:clr-trnsloff wh, lt gry aggs,f-v crs,vf-f i/p,pr srt,sbang-sbrnd,tr pyr cmt,50% mtx,mnr carb grs,lse-fri,pr inf & vis por,no fluor.

Survey @ 1761.8m: 27.2° 181.8AZ
TVD: 1727.3m

SILTY CLAYSTONE:brn gry-brn g/t SLTST,com carb spks,occ ca lams,micmic,sft,sbblky.

Survey @ 1790.1m: 26.78° 181.2
TVD: 1752.5m

WOB:20-27 klbs
RPM:170-180
SPP:3770-4030 psi
FLW:880-900 gpm

MW:1.44sg
EV:75
PV:42
YP:23
Gel:30/46/51
6/3 rpm:14/13
WL:3.6
Sol:18.3
Sand:0.25
CK:2

03-08-06

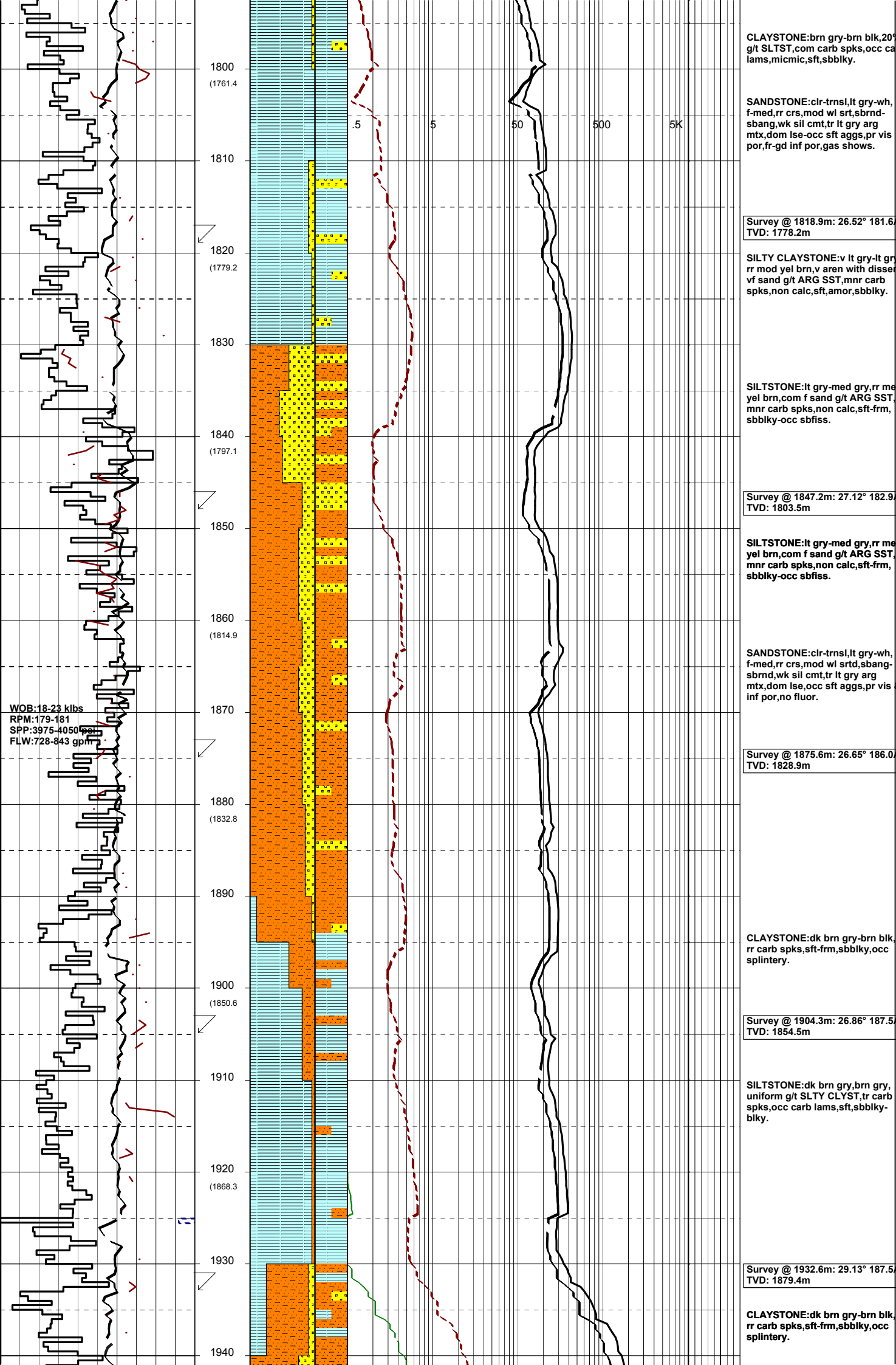
05-08-06

WOB:13-20 klbs
RPM:134-180
SPP:3974-4010 psi
FLW:810-846 gpm

WOB:13-20 klbs
RPM:134-180
SPP:3974-4010 psi
FLW:810-846 gpm

1650
1660 (1638)
1670
1680 (1655.6)
1690
1700 (1673.1)
1710
1720 (1690.5)
1730
1740 (1708.1)
1750
1760 (1725.7)
1770
1780 (1743.5)
1790

.5 5 50 500 5K



1800 (1761.4)
 1810
 1820 (1779.2)
 1830
 1840 (1797.1)
 1850
 1860 (1814.9)
 1870
 1880 (1832.8)
 1890
 1900 (1850.6)
 1910
 1920 (1868.3)
 1930
 1940

CLAYSTONE:brn gry-brn blk, 20% g/t SLTST, com carb spks, occ calams, micmic, sft, sbblky.

SANDSTONE:clr-trnsl, lt gry-wh, f-med, rr crs, mod wl srt, sbrnd-sbang, wk sil cmt, tr lt gry arg mtz, dom lse-occ sft aggs, pr vis por, fr-gd inf por, gas shows.

Survey @ 1818.9m: 26.52° 181.6°
 TVD: 1778.2m

SILTY CLAYSTONE:v lt gry-lt gry rr mod yel brn, v aren with disset vf sand g/t ARG SST, mnr carb spks, non calc, sft, amor, sbblky.

SILTSTONE:lt gry-med gry, rr me yel brn, com f sand g/t ARG SST, mnr carb spks, non calc, sft-frm, sbblky-occ sbfiss.

Survey @ 1847.2m: 27.12° 182.9°
 TVD: 1803.5m

SILTSTONE:lt gry-med gry, rr me yel brn, com f sand g/t ARG SST, mnr carb spks, non calc, sft-frm, sbblky-occ sbfiss.

SANDSTONE:clr-trnsl, lt gry-wh, f-med, rr crs, mod wl srt, sbrnd-sbang, wk sil cmt, tr lt gry arg mtz, dom lse, occ sft aggs, pr vis inf por, no fluor.

Survey @ 1875.6m: 26.65° 186.0°
 TVD: 1828.9m

CLAYSTONE:dk brn gry-brn blk, rr carb spks, sft-frm, sbblky, occ splintery.

Survey @ 1904.3m: 26.86° 187.5°
 TVD: 1854.5m

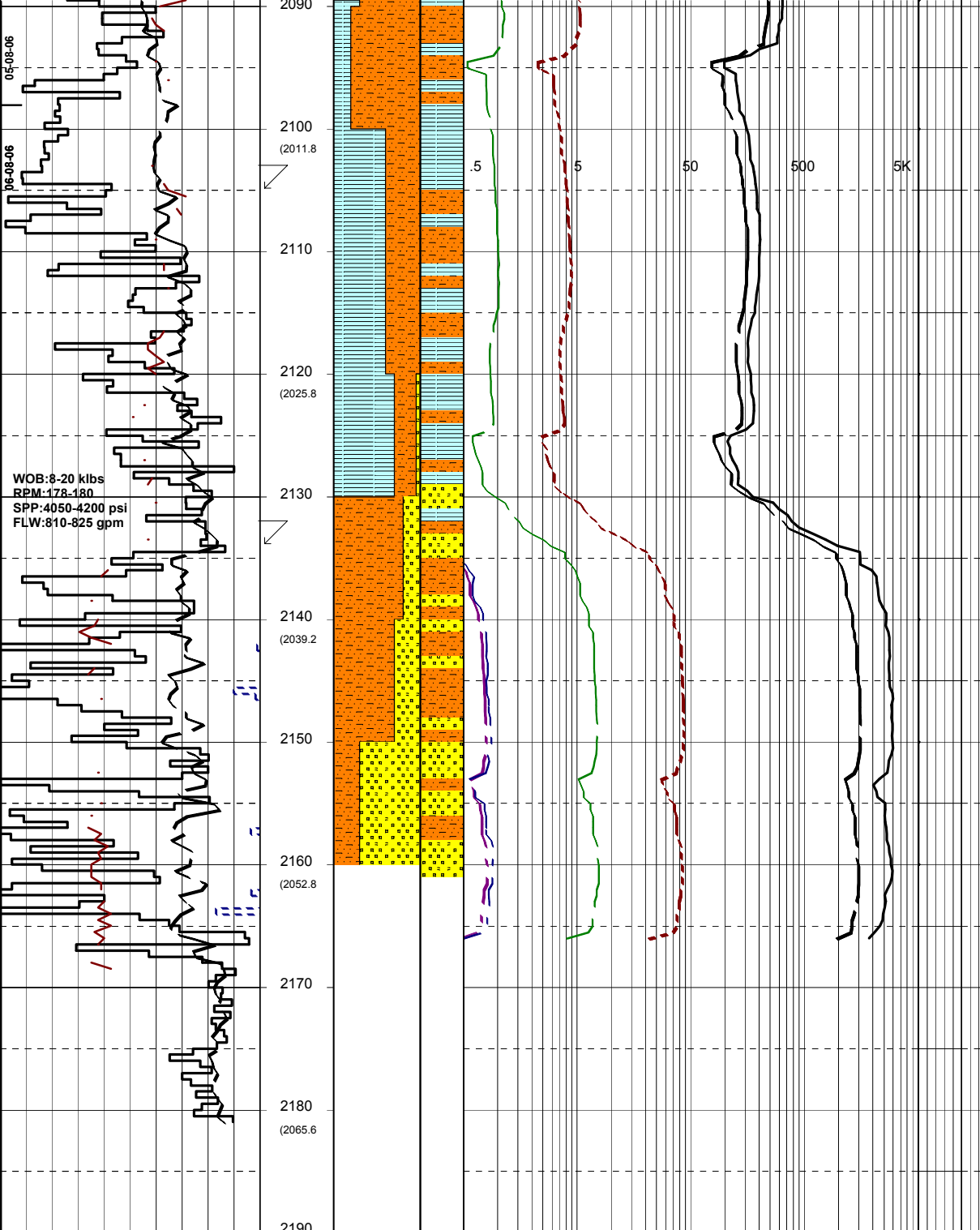
SILTSTONE:dk brn gry, brn gry, uniform g/t SLTY CLYST, tr carb spks, occ carb lams, sft, sbblky-blky.

Survey @ 1932.6m: 29.13° 187.5°
 TVD: 1879.4m

CLAYSTONE:dk brn gry-brn blk, rr carb spks, sft-frm, sbblky, occ splintery.

WOB:18-23 klbs
 RPM:179-181
 SPP:3975-4050 gpm
 FLW:728-843 gpm

.5 5 50 500 5K



CLAYSTONE: med gry-med dk g
arg, non calc, homogenous, v sft-
sft, occ frm, sbbly.

Survey @ 2105.3m: 45.26° 188.9
TVD: 2015.6m

SILTSTONE: med lt gry-med dk g
tr carb spks, tr liths, sft-frm,
sbbly-sbflss.

Survey @ 2133.7m: 47.33° 189.3
TVD: 2035.2m

SANDSTONE: clr-trnsl, tr pl yel,
tr lt gm lse grs, occ lt gry-off
wh aggs, vf-med, tr crs, mod wl sr
sbnag-sbrnd, wk calc cmt, strg sil
cmt, tr liths, tr carb spks, uncon-
lse, fr-gd inf por, gas shows.

